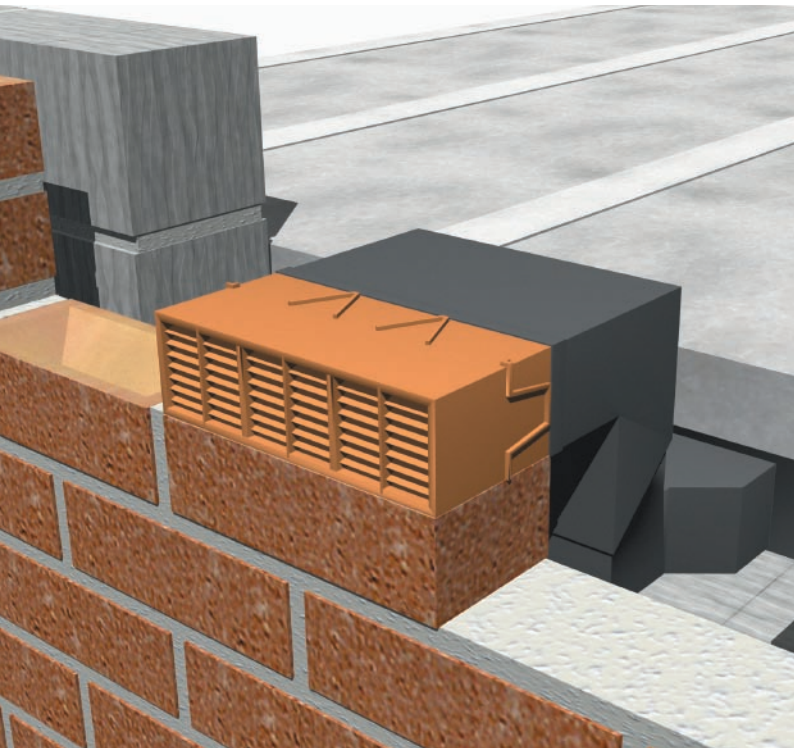




through wall and
underfloor ventilation
including weep vents and
the new core drill vent



through wall and underfloor ventilation

Modern construction practices have created thermally efficient buildings which require the installation of through wall ventilation products to prevent problems caused by condensation.

The increased use of suspended floors replacing the traditional concrete foundation has meant that the requirement to provide sufficient ventilation to the voids below floor level has also become paramount.

Building Regulations and NHBC guidelines state that a gap between the ground and the underside of the floor should be provided to prevent the build up and passage of condensation and contaminated air, and that this void should be adequately ventilated.

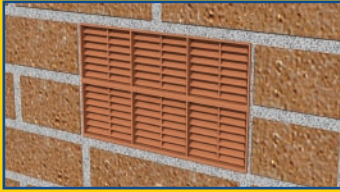
Manthorpe's range of ventilators and airbricks diffuse potentially dangerous gases, such as methane, which can seep from the ground in the space beneath timber and suspended floors.

- A** G930 Combination Airbrick
- B** G960 Telescopic Underfloor Ventilator
- C** G961 Vertical Extension Sleeve



Image shows the Telescopic Underfloor Ventilator, with Airbrick, along with use of the G961 Extension Sleeve fitted vertically in the centre of the Telescopic Vent and horizontally to extend the base of the Telescopic Vent.

G930 Combination Airbrick



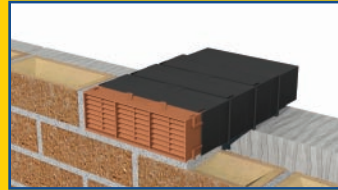
G961 Vertical Extension Sleeve



G960 Telescopic Underfloor Ventilator



G935 Combination Cavity Sleeve



The Manthorpe **G930 Airbrick** has been designed to provide high levels of ventilation into cavity walls and underfloor voids. The brick incorporates a front mounted grille together with water deflectors which include a 20mm integral rear upstand. A mortar key around the edge of the airbrick ensures secure adhesion to the building fabric and a clip together facility provides a choice of ventilation sizes. Manthorpe's G930 Airbrick is suitable for use with gas appliances.

The **G960 Vent** provides underfloor ventilation for suspended concrete and timber floors. The telescopic feature enables the ventilator to adjust vertically between three and five brick courses. Correct airflow requirements are achieved when the ventilator is used in conjunction with a Manthorpe G930 Airbrick. The aperture can also accept a standard clay airbrick, albeit with a reduced airflow.

The **G961 Vertical Extension Sleeve** has been designed for use with the Manthorpe Telescopic Underfloor Ventilator (G960). Each extension sleeve enables adjustment of a further two brick courses vertically. The sleeve can also be fitted to the base of the G960 to provide horizontal extension through larger cavities.

The **G935 Combination Cavity Sleeve** fits into the back of Manthorpe's G930 9 x 3 Airbrick to ventilate through a standard cavity or solid brick wall. The unit can be stacked to create a 9 x 6 and 9 x 9 alternative, and telescopes to fit cavity widths of 50mm to 100mm, with further extension possible through the addition of extra product units. The G935 also includes an integral wind baffle.

Product Specification Guide

Product Reference	Free Airflow mm ²	Size Width/Height
G930 Air Brick*	7,600	9x3/6/9
G960 Underfloor Vent	6,600	3-5 courses

*Available in brown, white, buff, blue/black, terracotta and grey.

Product Specification Guide

Product Reference	Free Airflow mm ²	Size Width/Height
G961 Extension Sleeve	6,600	+2 Courses per unit
G935 Cavity Sleeve	6,600	9x3/6/9

core drill ventilation system



Manthorpe's Core Drill Vent offers a through wall ventilation system with a facility to increase or decrease the air flow into the dwelling.

- A** G905 Cowl Vent
- B** G906 Louvre Vent
- C** Anti-draught baffle

The Manthorpe **5" Core Drill Vent G900** is designed predominantly for use when ventilating a gas appliance, although it can also be used to supply general through wall ventilation.

The kit includes a cowl vent for exterior use, a louvre grille for interior use, a 350mm length of pipe duct and an optional anti-draught baffle which reduces the airflow and also the feel of a draught through the vent. The vent can easily be fitted in both refurbishment and new build situations with the use of a 5" (127mm) diameter core drill. For situations where the total wall thickness exceeds 350mm, a 1,000mm pipe duct can be purchased separately.

Without the use of the anti-draught baffle, the free area of the vent is 100cm², enough to supply an appliance with a rated input of 27kW or 92,000 Btu/h (in accordance with BS5440 Pt.2:2000).

With the anti-draught baffle installed, the effective free area of the vent is reduced to 70cm² (BRE tested) providing enough ventilation for an appliance with an input rating of 21kW or 71,500 Btu/h.

Image shown is the complete Core Drill Vent, product code G900, shown with Anti-draught baffle.

The Cowl Vent, product code G905, and the Louvre Vent, product code G906, can be purchased separately.

Product Specification Guide

Product Reference	Free Airflow mm ²	Size Width/Height
G900 5" Core Vent	10,000 without baffle 7,000 (effective) with baffle	Max. 350mm long, 5" dia.

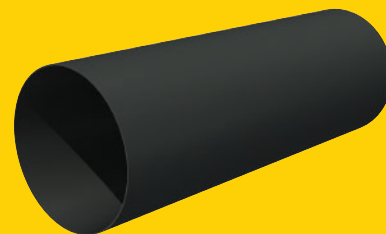
G905 Cowl Vent



G906 Louvre Vent



G909 1m Extension Pipe



Anti-draught baffle



The Manthorpe **G905 Cowl Vent** is designed for use on the exterior of a building to provide ventilation to an internal space. The cowl design minimises the amount of uncomfortable draught, reduces light and sound transfer from outside the property and acts as a barrier against wind driven rain whilst providing a free area (measured) of 100cm². The cowl vent is available in both brown and terracotta.

The Manthorpe **G906 Louvre Vent** is designed for use on the interior of a building to provide ventilation to an internal space. The louvre design minimises the amount of uncomfortable draught, reduces light and sound transfer from outside the property whilst providing a free area (measured) of 100cm². The louvre vent is only available in white.

The Manthorpe **G909 1m Extension Pipe**, with an outer diameter of 125mm, is ideal for use with other 5" core drill ventilator products from the range. The 1m duct can be used to increase the run of a duct if the 350mm version is not adequate to bridge through the wall thickness. The product can be cut down to fit the wall thickness required.

Detail sheets and fixing guidelines can be obtained from Manthorpe's Technical Department. Simply call 01773 514 200 or look on www.manthorpe.co.uk

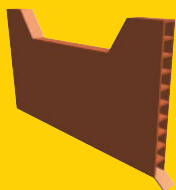
Also available is a range of data sheets which provide step-by-step guidance for the fitting of each product in the Manthorpe range.

Product Specification Guide

Product Reference	Colour	Box Quantity
G909 1m Extension Pipe	Black	1 (125mm diameter)

weep vents and stop ends

G950 Weep Vent



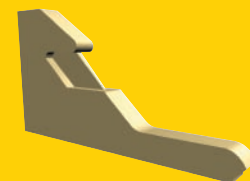
The **G950 Weep Vent** is generally used to drain lintels, cavity trays and to ventilate cavity walls. The vent has a baffled grille to prevent the ingress of driving rain and wind whilst incorporating an insect grille and drip lip. The grille is specifically sized to prohibit large insects gaining access but wide enough not to be blocked by debris, paint or water droplets (see BS5250 section 6). The G950 Weep Vent should be simply fitted into open perp. joints and mortared in position.

When used with the Manthorpe range of catchment trays the Weep Vent should be placed in the furthest corner away from the finished roof line. The Weep Vent should be spaced at no greater than 900mm centres to meet N.H.B.C guidelines, which state, “weep holes are recommended to be sited at every 450mm maximum with at least two per opening above all windows and doors.”

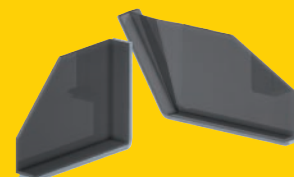
Product Specification Guide

Product Reference	Free Airflow mm ²	Size Width/Height
G950 Weep Vent*	220	100x65mm

G951 Peep Weep



G955 Lintel Stop End plus G956 Adjustable Lintel Stop End



The **G951 Peep Weep** provides an unobtrusive solution to cavity wall drainage requirements. The weep features a mortar key to ensure adhesion to the building fabric and an external rib to aid positioning.

The weep's protective hood is designed to guard against blockage during installation and stops penetration of wind driven rain. The exit hole is ample for water drainage but small enough to prevent entry of large insects.

The **G955 Lintel Stop Ends** are designed to prevent water spilling off the ends of lintels into the cavity below, causing damage and expensive repairs. In line with current recommendations, the G955 Lintel Stop Ends provide an economical and simple solution to this problem. Supplied in pairs for convenience on site, the attached adhesive tape also ensures that a tightly bonded joint is achieved between the stop end and lintel.

Product Specification Guide

Product Reference	Size Width/Height
G951 Peep Weep*	100x65mm
G955 Lintel Stop End (pairs)	95x65mm
G956 Adjustable Lintel Stop End	20x60x136mm max.

* Available in buff, terracotta, brown, white, clear and blue/black.

Manthorpe Building Products Ltd
Manthorpe House
Brittain Drive
Codnor Gate Business Park
Ripley, Derbyshire DE5 3ND

Tel: 01773 514 200
Email: sales@manthorpe.co.uk
www.manthorpe.co.uk



References:

B.S 5440:2000 Part 2: Specification for installation and maintenance of ventilation for gas appliances.

B.S 5250: 1989 Control of condensation in buildings.

NHBC Standard 5.2: Suspended ground floor.

NHBC Thermal Insulation and Ventilation
– Good Practice Guide.

Manthorpe Quality

Manthorpe manufactures a range of ventilation and building products at its headquarters in Derbyshire, under a ISO9001 Quality Assurance Scheme.

All products are designed to comply with the relevant current Building Standards when fitted in accordance with the manufacturer's instructions.

The company maintains a policy of continuous development of its product range and reserves the right to amend the specifications without notice.

