

Dry Ridge Saddle Clamp

CODE GDR-SC

Description

The Manthorpe GDR-SC Saddle clamp is designed to provide a stable mounting to install a ridge batten to the apex of a roof to then allow the Manthorpe Dry Ridge Tile to be fitted. The clamp works by locating the apex of each of the trusses, to which a Saddle Clamp base is fitted at the top of each truss along the ridge. Then a 38mm x 25mm timber batten sits in the recess of each saddle clamp base. The top half of the Saddle Clamp is placed over the batten and lined up with the holes in the base. Using the screws provided, it securely fastens the entire assembly down. Additional batten height can be added if required, a second timber can be secured along the top of the first batten. With the ridge batten in place, the GDR-T Dry Ridge Tile system can now be installed onto it.

Note: If the roof is built in the traditional method, where a ridge board already exists, there is no need to install a ridge batten using the GDR-SC Saddle Clamp.

Fitting

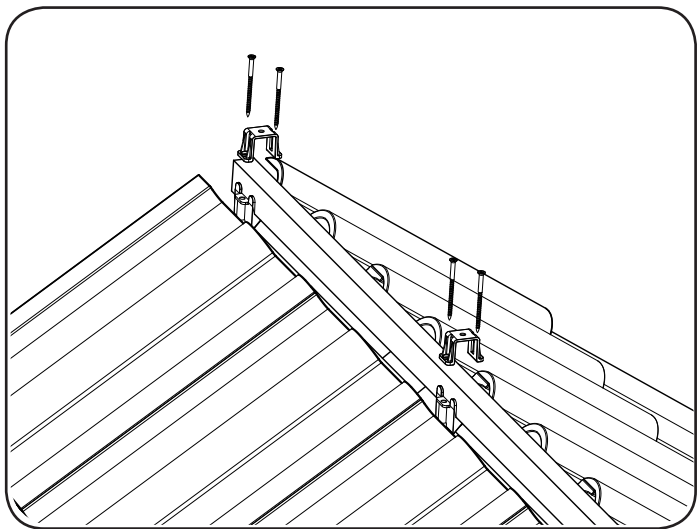
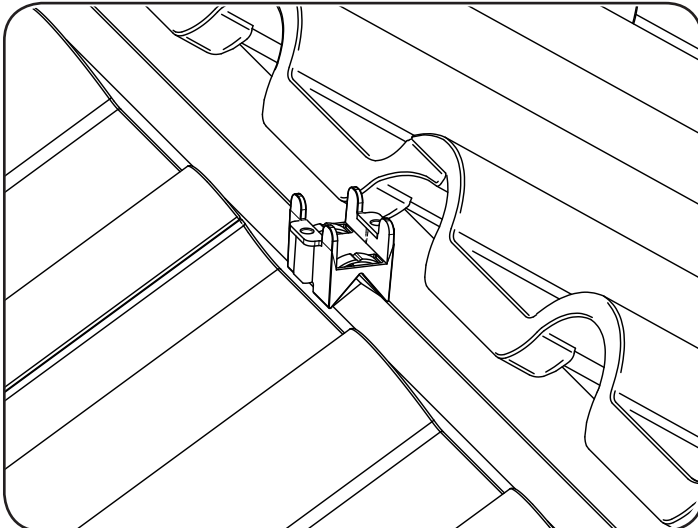
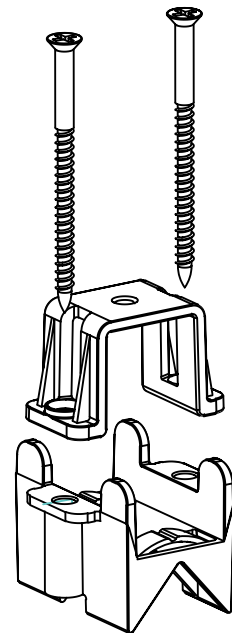


Fig.1

Exploded view of the GDR-SC Saddle Clamp assembly.



References

BSI: British Standard 5534:2003
 BSI: British Standard 6399-2:1997
 NHBC Standards Chapter 7.2

Specification

Colours - Saddle Clamp	Black
Packing Details	Pack of 10 inc. screws
Weight	0.037 kg each
Saddle Clamp Materials	Polypropylene
Screws	Stainless Steel
Manufacturing process	Injection moulded

MANTHORPE BUILDING PRODUCTS LTD
 MANTHORPE HOUSE
 BRITAIN DRIVE
 CODNOR GATE BUSINESS PARK
 RIPLEY
 DERBYSHIRE DE5 3ND

TEL: 01773 514 200
 FAX: 01773 514 262
 EMAIL: sales@manthorpe.co.uk
 WEB: www.manthorpe.co.uk

DRN B.H. Date 31/03/08

The company maintains a policy of continuous development of its product range and reserves the right to amend the specification without notice.

DRG No
MBP 8273
 PAGE (1 OF 2)

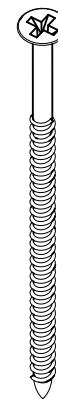
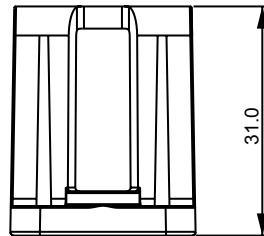
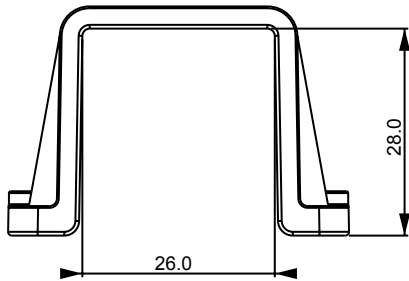
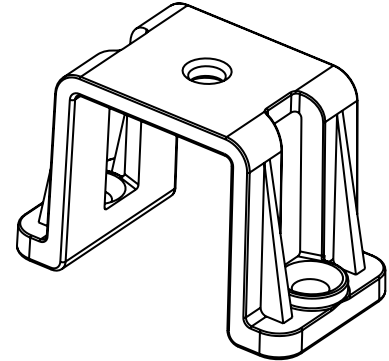
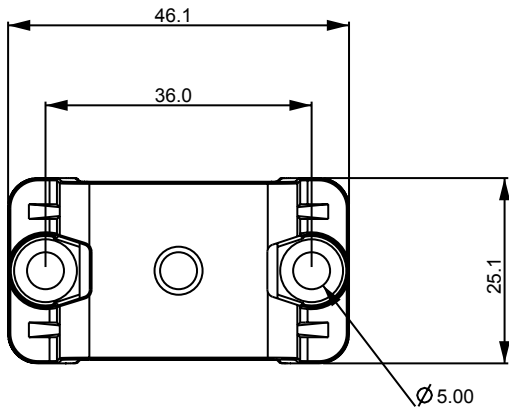
Issue

A

Dry Ridge Saddle Clamp

CODE GDR-SC

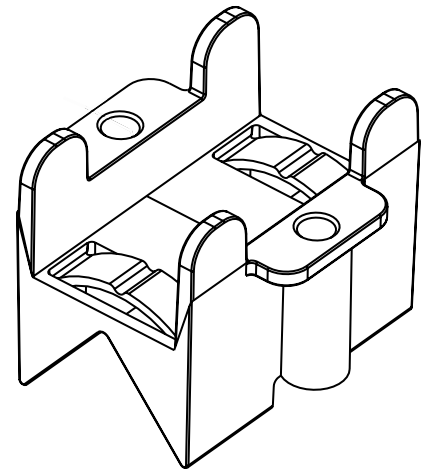
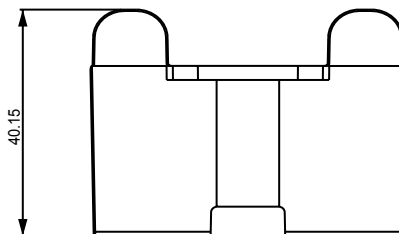
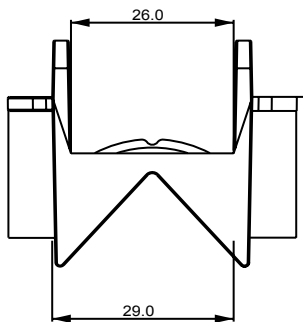
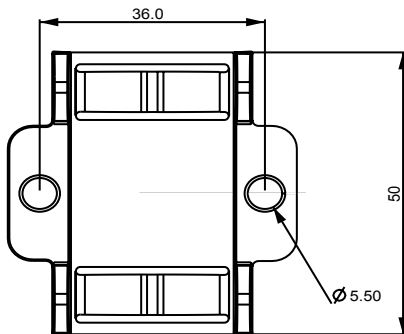
SADDLE CLAMP TOP



x2

Zinc Plated
Countersunk Steel
100mm x 4mm
Screws

SADDLE CLAMP BASE



MANTHORPE BUILDING PRODUCTS LTD
MANTHORPE HOUSE
BRITAIN DRIVE
CODNOR GATE BUSINESS PARK
RIPLEY
DERBYSHIRE DE5 3ND

TEL: 01773 514 200
FAX: 01773 514 262
EMAIL:
sales@manthorpe.co.uk
WEB
www.manthorpe.co.uk

DRN B.H

Date 31/03/08

DRG No

Issue

The company maintains a policy of continuous development of its product range and reserves the right to amend the specification without notice.

MBP 8273
(PAGE 2 OF 2)

A