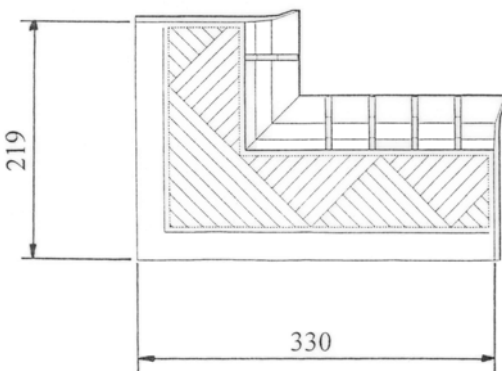
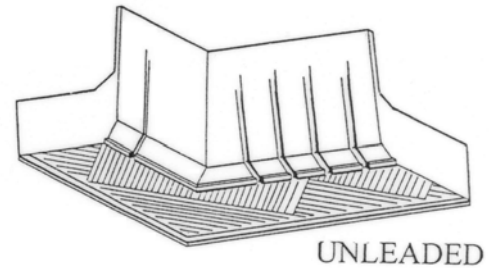
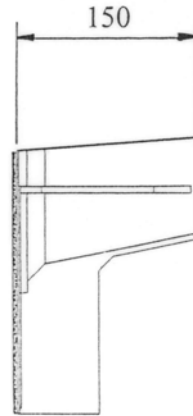
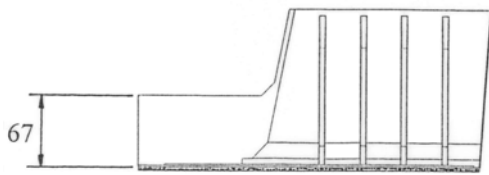
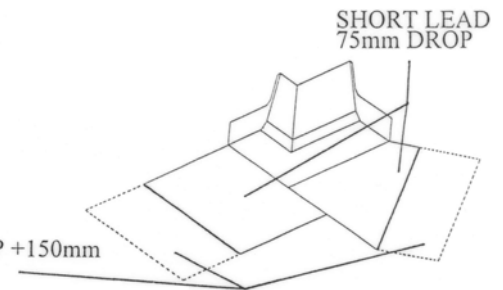


## Corner Catchment Tray Left Hand

CODE GW293 CC LH



LONG LEAD 75mm DROP +150mm TO DRESS OVER TILES



### Description:

The GW293 CC Corner Catchment Tray is designed for situations where an abutment ends at a corner to shield the corner from water entry, and where restricted space prohibits the fitting of a standard catchment tray.

The tray has up stands at both ends ensuring the water, which runs down from the trays above, is collected and safely diverted out of the wall.

A G950 Weep Vent must be used in conjunction with this tray to drain the collected water away.

The tray includes a foam strip that is easily raked out exposing a 25mm deep aperture into which the lead is inserted and secured with lead wedges.

The GW293 CC Corner Catchment Tray can also be supplied with short or long lead securely attached with staples and sealant in either code 4 or code 5 (special order) lead.

**Note: - When ordering trays please state roof pitch and whether short or long lead is required.**

COLOURS	Black
PACKING DETAILS	Packed in 25's in cardboard box (unloaded).
WEIGHT	4.2kg per box (unloaded)
MATERIAL	Polypropylene
MANUFACTURING PROCESS	Vacuum Formed
SUITABLE FOR CAVITY WIDTHS	50mm to 100mm
SUITABLE FOR PITCHES	17.5 to 50
BED SIZE	102.5mm

### References:

BRE	:	Building Elements Walls, Windows, Doors
BRE	:	DIGEST 262/380
BSI	:	BS5628
BSI	:	BS8000 Part 3
BSI	:	BS8215
NHBC	:	Standards 6.1

MANTHORPE BUILDING PRODUCTS LTD  
MANTHORPE HOUSE  
BRITAIN DRIVE  
CODNOR GATE BUSINESS PARK  
RIPLEY  
DERBYSHIRE DE5 3ND

TEL: 01773 514 200  
FAX: 01773 514 262  
EMAIL:  
[sales@manthorpe.co.uk](mailto:sales@manthorpe.co.uk)  
WEB:  
[www.manthorpe.co.uk](http://www.manthorpe.co.uk)

DRN M.L.W.O

Date 01.08.03

DRG No

Issue

The company maintains a policy of continuous development of its product range and reserves the right to amend the specification without notice.

**MBP 8036**

**A**