



# thermal cavity closers



# thermal cavity closers

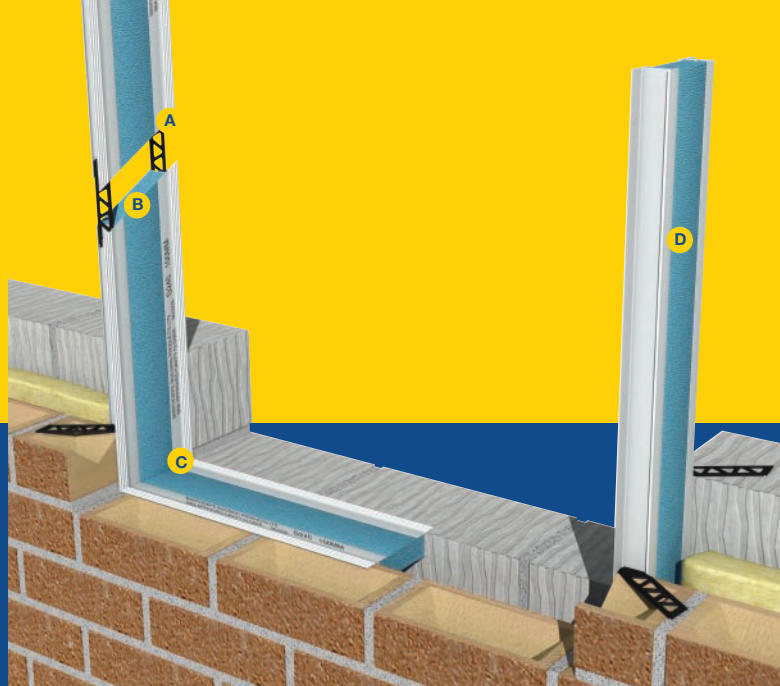
Manthorpe's Thermal Cavity Closers provide a versatile solution to cold bridging problems. They also save time in construction by closing the cavity without the need to return the blockwork.

The Manthorpe range of Cavity Closers offers an economical solution to closing the cavity at window and door reveals while also solving cold bridging problems. Cavity Closers not only provide a thermal break at the reveal of both door and window openings, they also act as an effective vertical damp proof course (DPC), ensuring compliance with Building Regulations.

The Manthorpe Cavity Closer also addresses the issue of condensation and promotes an air tight detail. Thermal efficiency can be achieved assuming that all other relevant work has been done in accordance with best practice.

The cavity closer is non-load bearing and should not be used as replacement for traditional methods of fixing window and door frames to the masonry.

The lightweight closers are available in sizes to suit all cavity widths and are simply installed, requiring no special tools. Lengths can be simply cut with a saw, with no loss of thermal efficiency, and with some specific products, PVC flanges provide a secure method of fixing. The closer can be used in individual lengths, or some may be preformed into frames or fixed directly onto window and door frames.



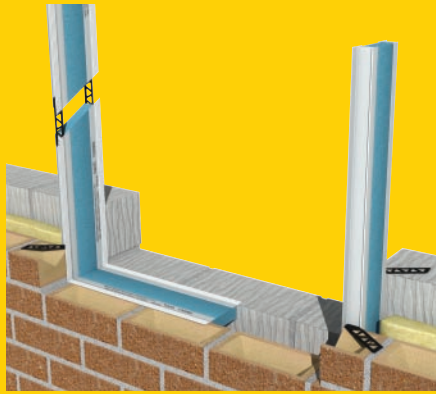
- A Lengths can be easily joined together without loss of thermal efficiency
- B Clips enable lengths to be joined together and securely fix the closer to the brickwork
- C Right-angled clips help form solid jointed corners
- D Extruded polystyrene foam insulating material

Image shown is G240

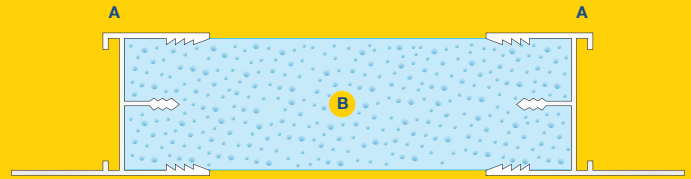
## **This booklet contains information on the:**

- G240/G242/G243/G244 range, GWP rating of less than 5
- G241 Single Flange Cavity Closer, including G241M Multi Width Cavity Closer
- G247 Cavity Closer, including G247M Multi Width Cavity Closer
- G249F Fire Rated Cavity Closer range
- G280 Frame Former

## G240 Cavity Closer range



## G240 Cavity Closer



**A Double flange feature**

**B Insulation providing a GWP rating of less than 5**

- The **G240 Cavity Closer** has a double flange feature for use in standard in-line cavity wall details. It is also used in sill details by simply cutting a length to suit the width of the window and placed in the cavity at the sill. A DPC is still recommended in horizontal applications.
- **Plastic Fixing Clips G245** enable the closer to be mortared securely to the brickwork. They also allow shorter lengths of closer to be joined together, thus reducing wastage.

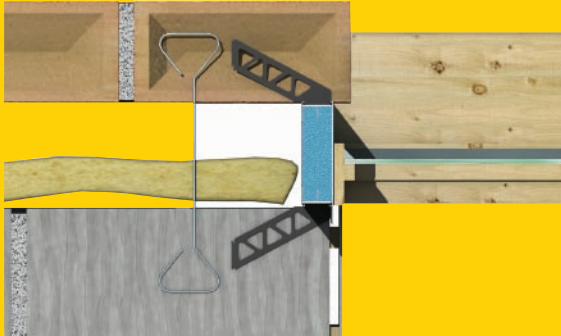
The clips slide into the fixing channel allowing variable height adjustment to match brick courses. Eight clips are recommended per 2.5m length of cavity closer.

- The **Right Angle Clips G246** provide a tight fit and form solid jointed corners which helps prevent misalignment. These clips are also used to form cavity frames.
- The **Manthorpe G240 Cavity Closer** can be used around timber doors and windows. When tested as a whole detail including timber window/door frames and plasterboard, it can be used as a part of a detail to satisfy the requirements of a cavity barrier as described in Part B of the building regulations.

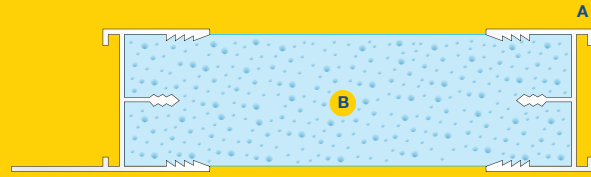
### Product Specification Guide

Product	Length	Cavity Width			Pack/Qty		
G240	2.5m	50mm	65mm	75mm	90mm	100mm	6 per pack
<b>Additional Sizes are Available to Order</b>							
G245	Plastic Fixing Clips						100 per pack
G246	Right Angle Clips						50 per pack

## G242 Single Flange Cavity Closer



## G242 Cavity Closer



- A** Flush second flange for use in rebated reveal details
- B** Insulation providing a GWP rating of less than 5

- The **G242 Single Flange Cavity Closer** is available from Manthorpe to fit into a rebated detail where the window frame is positioned behind the outer leaf.
- The **G243 and G244 Flexible Cavity Closers** sections allow for arched and round windows and doors to be easily incorporated into building designs without compromising insulation requirements.

Any size opening can be produced, from domestic 'bull's eye' windows to large commercial applications, through its unique joining system and flexible capability.

The Manthorpe G242 Cavity Closer can be used around timber doors and windows. When tested as a whole detail including timber window/door frames and plasterboard, it can be used as part of a detail to satisfy the requirements of a cavity barrier as described in Part B of the building regulations.

### Product Specification Guide

Product	Length	Cavity Width					Pack/Qty
G242	2.5m	50mm	65mm	75mm	90mm	100mm	6 per pack
G243	2.5m	50mm	65mm	75mm	90mm	100mm	To order
G244	2.5m	50mm	65mm	75mm	90mm	100mm	To order

## The G247 range double flange

Multi width cavity closer

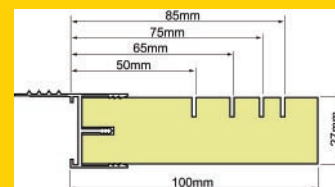
G247 Cavity Closer



## The G241 range single flange

Single flange cavity closer

G241 Cavity Closer



The **G247M Cavity Closer** suits standard cavity widths between 50mm and 100mm. It provides an economical solution to cold bridging problems.

The **G247** range is available to suit a range of cavity widths alongside the **G247M** Multi Width Cavity Closer which is designed to enable the stockist to hold one size which can be easily trimmed to suit specific cavity width requirements.

It not only provides a thermal break to the cavity but also acts as an effective DPC barrier.

Product Specification Guide				
Product	Length	Cavity Width	Weight per pack	Pack/Qty
G247-50	2.44m	50mm	4.75kg	6 lengths
G247-65	2.44m	65mm	4.84kg	6 lengths
G247-75	2.44m	75mm	4.90kg	6 lengths
G247-90	2.44m	90mm	5.10kg	6 lengths
G247-100	2.44m	100mm	5.42kg	6 lengths
G247M	2.44m	*	5.42kg	6 lengths

\*Supplied in 100mm capacity widths but can be cut to suit various cavity widths using the groove guides.

- The **G241** is an economy, single extrusion fitted version of the G240. It is also used in sill details by simply cutting a length to suit the width of the window and placing it in the cavity at the sill. A DPC is still recommended in horizontal applications.
- The **G241M** Multi Width Cavity Closer has groove guides which allow it to be cut to a variety of widths.

Product Specification Guide				
Product	Length	Cavity Width	Weight per pack	Pack/Qty
G241-50	2.44m	50mm	6.0 kg	6 lengths
G241-65	2.44m	65mm	6.2 kg	6 lengths
G241-75	2.44m	75mm	6.4 kg	6 lengths
G241-90	2.44m	90mm	6.6 kg	6 lengths
G241-100	2.44m	100mm	6.8 kg	6 lengths
G241M	2.44m	50 - 100mm	6.8 kg	6 lengths
G241 – Intermediate sizes up to 150mm are available to order				

Fire rated range

# fire rated cavity closer



The Manthorpe G249F ½ Hour Fire Rated Cavity Closer has been designed for use where a fire barrier is required to seal cavities around window and door reveals of a building.

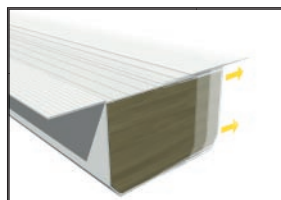
The unique compressible clip feature allows the product to compress into the cavity creating a continuous seal to any varying width. The enclosed box design incorporates a fibre insulating core which provides an economical solution to cold bridging as it acts as a thermal cavity closer, as well as a DPC and ½ hour fire barrier.

It is manufactured in white in four sizes which suit cavity widths from 50mm to 130mm. It can easily be installed either in new build or refurbishment situations with no special fixing requirements or tools.

The Manthorpe **G249F ½ Hour Fire Rated Cavity Closer** has been designed to comply with Building Regs. Part L and Scottish Technical Standards Part D.

- Rigid extruded UPVC sections with unique variable clip feature
- Compressed mineral fibre wool insulation

Fire Rating for all of the opposite is ½ hour insulation and integrity carried out by Warrington Fire Research: No.134212. Manufacturing process is by extrusion.



## Product Specification Guide

Product	Length	Cavity Width	Material	Pack/Qty
<b>Standard Reveal Double Flange</b>				
G249-50-70F	2.4m	50-70mm	PVCU	3 per pack
G249-70-90F	2.4m	70-90mm	PVCU	3 per pack
G249-90-110F	2.4m	90-110mm	PVCU	3 per pack
G249-110-130F	2.4m	110-130mm	PVCU	3 per pack
<b>Rebate Reveal Single Flange</b>				
G249R-50-70F	2.4m	50-70mm	PVCU	3 per pack
G249R-70-90F	2.4m	70-90mm	PVCU	3 per pack
G249R-90-110F	2.4m	90-110mm	PVCU	3 per pack
G249R-110-130F	2.4m	110-130mm	PVCU	3 per pack

# rigid frame former

A faster, more efficient, more cost effective alternative to made-on-site timber equivalents.

Strong, extremely simple to install and available in a multitude of widths, the Manthorpe Rigid Frame Former has been designed to improve efficiency, speed up installation and save man hours.

The use of a Rigid Frame Former helps avoid the site clutter that arises from dummy timber frames, which are prone to damage when left lying around. It comes in both single and double flange options.

## Say goodbye to dummy timber frames

They're time consuming to make, cause on-site clutter, are easily damaged and, most importantly, they are outperformed on every count by the Manthorpe Rigid Frame Former.



## The G280FF Made up frame former



## Ready assembled or flat packed

Choose the option that suits you best – either ready assembled or cut-to-length, palletised flat packs.

Easy to transport and easy to store on-site, the flat pack version has proven to be extremely popular in tests, reducing clutter (no more piles of frames) and leading to quicker, better organised ways of working. Assembly is easy and fast – just click to fit.

## Rigidity ensured

Quick-to-fit corner braces and horizontal battens, secured with self-tapping screws, ensure that rigidity is maintained. For larger doors and windows, where extreme rigidity is required, a diagonal brace is also provided. Braces and battens are re-usable.

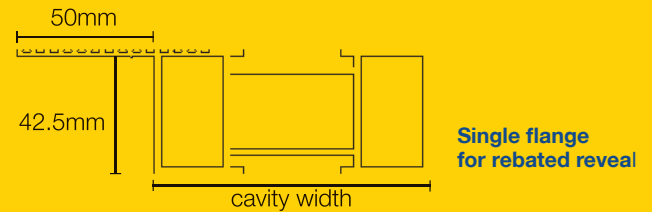
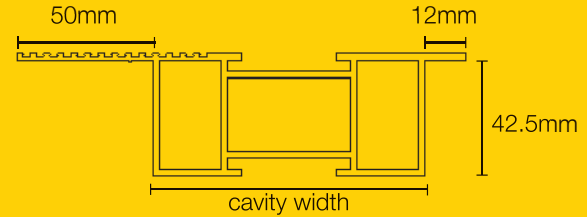
## Project specific take off service

For larger projects we offer builders, architects and developers a project specific take off service. Simply let us have the information or drawings and we will calculate the size of the window openings and supply Manthorpe Rigid Frame Formers specific to that particular development, streamlining operations, saving more time and increasing efficiency even further.



## Dimensions

### Side window configurations



## Other Configurations

### For door and side windows

As well as windows and doors Manthorpe also offers P, T and Q shaped frames (Images shown are P and T). With these larger frames we recommend that they are transported flat pack for reasons of safe delivery.

## Thermal Efficiency

The Manthorpe Frame Former meets all current building regulations and achieves the required thermal break at the reveal of the window and door openings when fixed to allow a 30mm overlap into the cavity. This applies to sills, doors and rebated reveals.

### Product Specification Guide

Code	Flange	Type	Cavity Width
G280-75FF	Double	Made Up	75mm
G280-85FF	Double	Made Up	85mm
G280-90FF	Double	Made Up	90mm
G280-100FF	Double	Made Up	100mm
G280-110FF	Double	Made Up	110mm
G280-120FF	Double	Made Up	120mm
G280-130FF	Double	Made Up	130mm

FF refers to a made up frame

### Product Specification Guide

Code	Flange	Type	Cavity Width
G282-75FF	Single	Made Up	75mm
G282-85FF	Single	Made Up	85mm
G282-90FF	Single	Made Up	90mm
G282-100FF	Single	Made Up	100mm
G282-110FF	Single	Made Up	110mm
G282-120FF	Single	Made Up	120mm
G282-130FF	Single	Made Up	130mm

To order a flat pack version replace FF with FP in the Product code.

Manthorpe Building Products Ltd  
Manthorpe House  
Brittain Drive  
Codnor Gate Business Park  
Ripley, Derbyshire DE5 3ND

Tel: 01773 514 200  
Email: sales@manthorpe.co.uk  
www.manthorpe.co.uk



## References:

Building Regulations  
Approved Document Part L  
Scottish Technical Standards Part D

The NHBC  
Good Practice Guide Thermal Insulation  
and Ventilation  
NHBC Standards 6.1 D4 / S4 (d)

BRE (Building Research Establishment)  
2002 Thermal Insulation Avoiding Risks  
Information Paper I.P. 8/08  
Digest 2.62

DEFRA / DTLR  
Robust Details

## Manthorpe Quality

Manthorpe manufactures a range of ventilation and building products at its headquarters in Derbyshire, under an ISO9001 Quality Assurance Scheme.

All products are designed to comply with the relevant current Building Standards when fitted in accordance with the manufacturer's instructions.

The company maintains a policy of continuous development of its product range and reserves the right to amend the specifications without notice.

