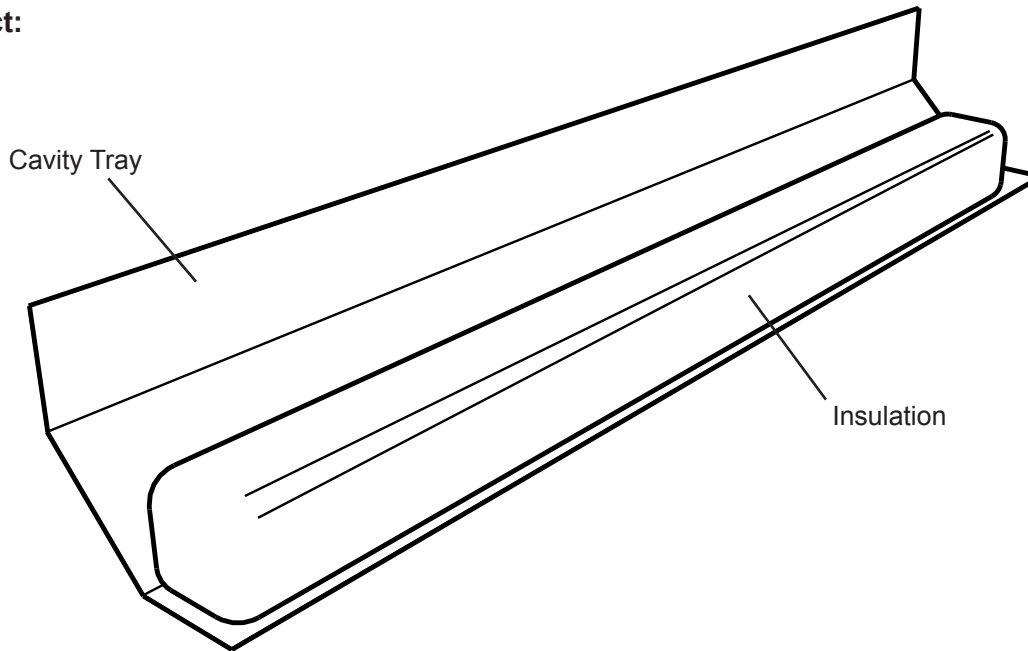


Horizontal Acoustic Cavity Fire Barrier with Integral Cavity Tray (30min Fire Resistance)

CODE: GWCB-H

Product:



Description:

The Manthorpe Horizontal Acoustic Cavity Fire Barrier with Integral Cavity Tray is designed for use in masonry or timber frame cavity walls as a horizontal cavity fire barrier.

It is suitable for cavity widths ranging from 50mm to 100mm and combines the benefits of a cavity fire barrier with integral Cavity Tray whilst reducing sound transmission along the cavity of external walls..

The Horizontal Cavity Fire Barrier is manufactured from glass mineral wool which has a Euroclass A1 fire rating when classified in accordance with BS EN 13501-1. The insulation has also been tested for fire resistance (integrity and insulation) in accordance with BS 476: Part 20: 1987 and can provide 30 minutes fire resistance (see Warrington Fire Test Report No. C52472).

Part E and Robust Details Building Regulations for England and Wales require the use of a cavity closer to reduce flanking noise transmission along party wall cavities and external wall cavities in masonry, timber frame and steel frame construction.

Manthorpe Cavity Barriers meet the generic description for cavity closers and will thus ensure compliance with Part E and Robust Details in masonry, timber frame, and steel frame construction.

Product Code	Width mm	For Cavity Sizes (x) mm	Qty per Pack
GWCB-H-50-65	100	50-65	20
GWCB-H-66-80	100	66-80	20
GWCB-H-81-100	100	81-100	20

MANTHORPE BUILDING PRODUCTS LTD
 MANTHORPE HOUSE
 BRITTAIN DRIVE
 CODNOR GATE BUSINESS PARK
 RIPLEY
 DERBYSHIRE DE5 3ND

TEL: 01773 514 200
 FAX: 01773 514 262
 EMAIL:
 sales@manthorpe.co.uk
 WEB
 www.manthorpe.co.uk

DRN R.P Date 10.10.07

The company maintains a policy of continuous development of its product range and reserves the right to amend the specification without notice.

DRG No
MBP 8258
 (Sheets 1 of 2)

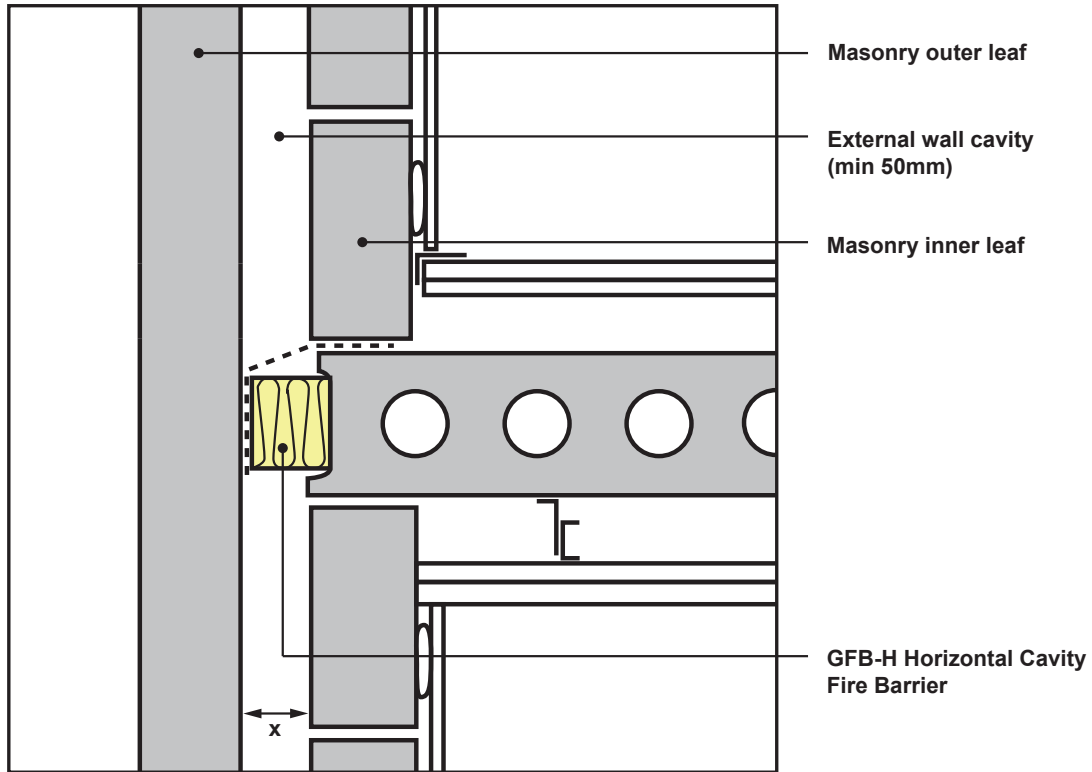
Issue

A

Horizontal Acoustic Cavity Fire Barrier with Integral Cavity Tray (30min Fire Resistance)

CODE: GWCB-H

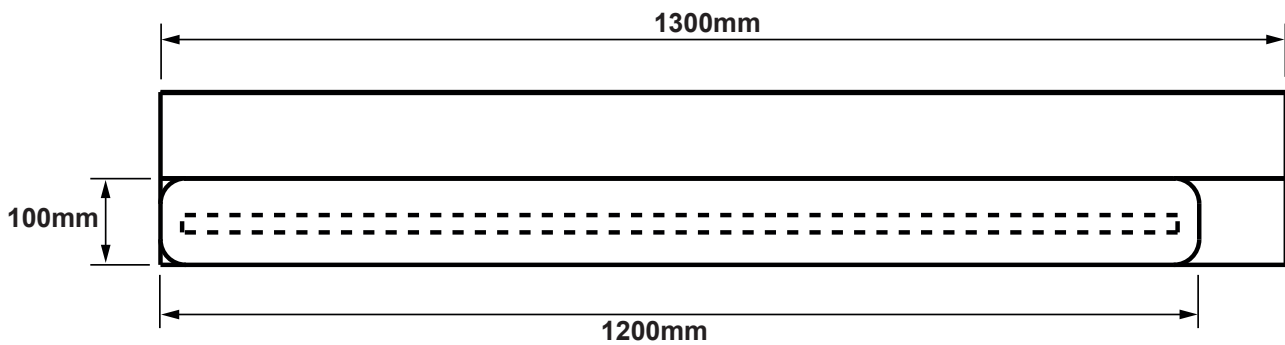
Side View Section:



References:

WFRC Report No. C52472
 BS EN 13501-1 (Euroclass A1)
 BS 476: Part 20: 1987 (30 Mins)

Dimensions:



MANTHORPE BUILDING PRODUCTS LTD
 MANTHORPE HOUSE
 BRITAIN DRIVE
 CODNOR GATE BUSINESS PARK
 RIPLEY
 DERBYSHIRE DE5 3ND

TEL: 01773 514 200
 FAX: 01773 514 262
 EMAIL: sales@manthorpe.co.uk
 WEB: www.manthorpe.co.uk

DRN R.P Date 10.10.07

The company maintains a policy of continuous development of its product range and reserves the right to amend the specification without notice.

DRG No
MBP 8258
 (Sheets 2 of 2)

Issue

A