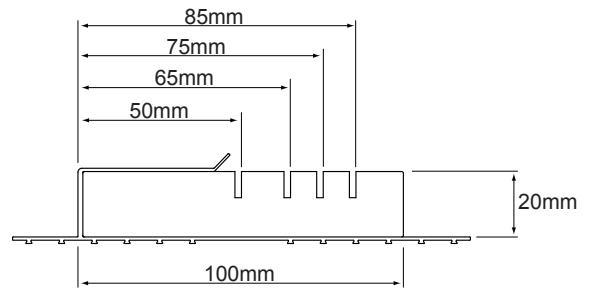


## Thermal Cavity Closer

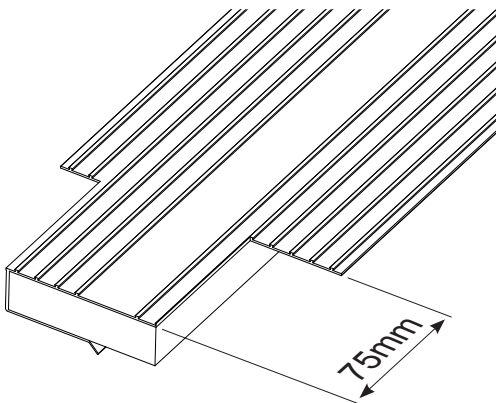
CODE G247 & G247M

### Product Preparation

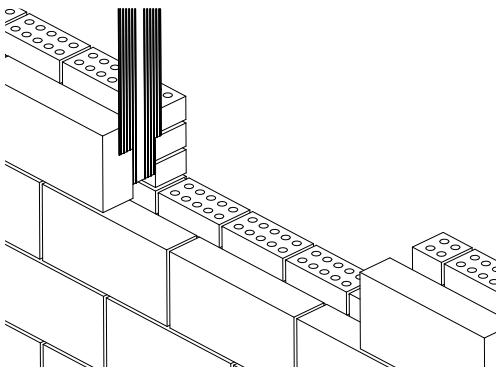
**Important:** When using the G247M Multi Width Cavity Closer use the groove guides to cut down the entire length of the product with a knife. Fig.1 shows groove guides and their corresponding widths.



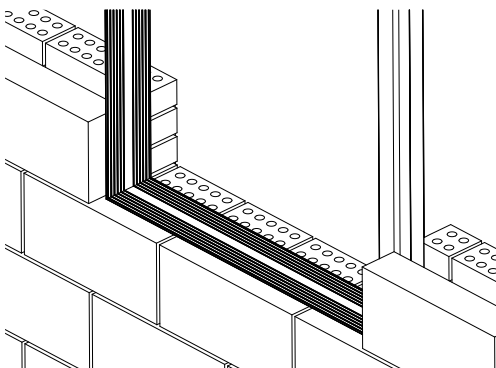
### Product Installation



1. Brick up the cavity wall to sill height in the conventional manner. Cut two jamb sections 75mm over-size. Trim the flanges on either side back by 75mm as shown in the diagram. The jamb sections will become handed in doing this so take care to cut the correct ends.



2. Place these jamb sections up either side of the opening with the 75mm trimmed section at the bottom. The side with the longer flange should point to the inside of the property. Allow the trimmed section to drop down inside the cavity, below the sill level.



3. Cut a third piece of cavity closer to length ensuring it will fit between the jamb sections. Drop this piece horizontally along the sill with the insulation dropping down inside the cavity. Secure all pieces of the cavity closer by plugging and screwing through the larger flange into the internal leaf

MANTHORPE BUILDING PRODUCTS LTD  
MANTHORPE HOUSE  
BRITAIN DRIVE  
CODNOR GATE BUSINESS PARK  
RIPLEY  
DERBYSHIRE DE5 3ND

TEL: 01773 514 200  
FAX: 01773 514 262  
EMAIL: sales@manthorpe.co.uk  
WEB: www.manthorpe.co.uk

DRN M.R Date 9.1.08  
The company maintains a policy of continuous development of its product range and reserves the right to amend the specification without notice.

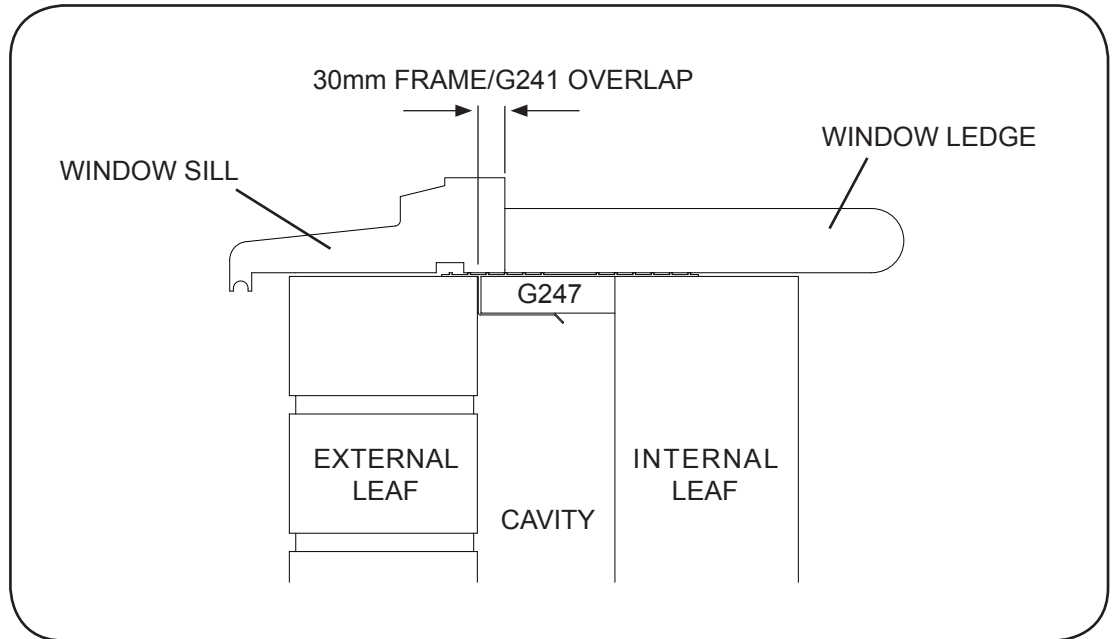
DRG No  
**MBP 8239**  
PAGE (1 OF 2)

Issue  
**C**

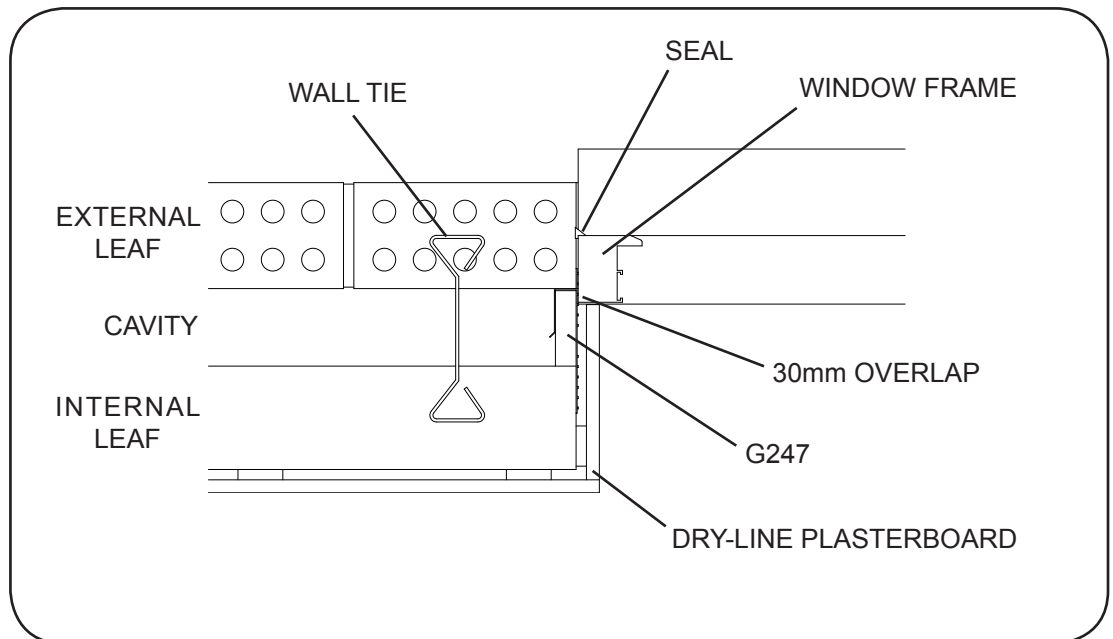
## Thermal Cavity Closer

CODE G247 & G247M

### SILL DETAIL



### JAMB DETAIL



Fit window as per normal practice ensuring at least a 30mm overlap between the closer and window frame. The installation is completed by the application of a weatherproof seal between the frame and outer leaf.

**Note:** The cavity closer is a non-load bearing product and must not be used as replacement for traditional methods of fixing window and doorframes to the masonry.

MANTHORPE BUILDING PRODUCTS LTD  
MANTHORPE HOUSE  
BRITAIN DRIVE  
CODNOR GATE BUSINESS PARK  
RIPLEY  
DERBYSHIRE DE5 3ND

TEL: 01773 514 200  
FAX: 01773 514 262  
EMAIL:  
sales@manthorpe.co.uk  
WEB  
www.manthorpe.co.uk

DRN M.R

Date 9.1.08

DRG No

Issue

The company maintains a policy of continuous development of its product range and reserves the right to amend the specification without notice.

**MBP 8239**  
(PAGE 2 OF 2)

**C**