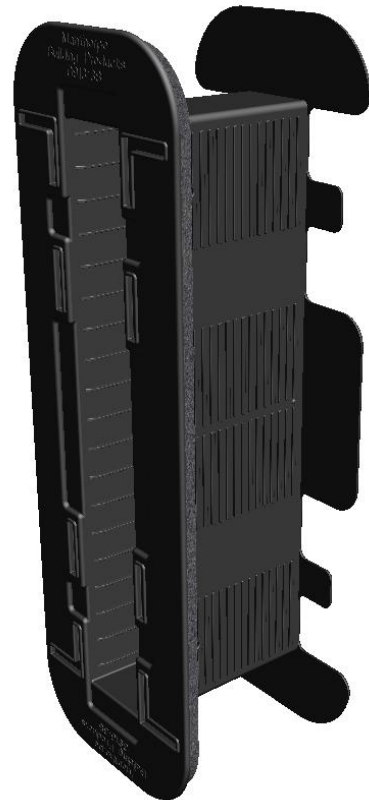
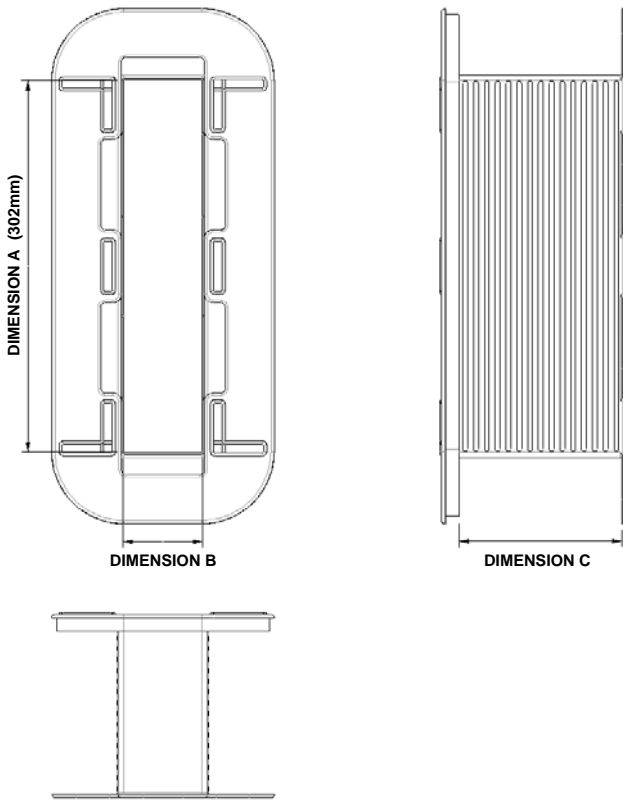


Joist Seal Description (Height of 302mm)

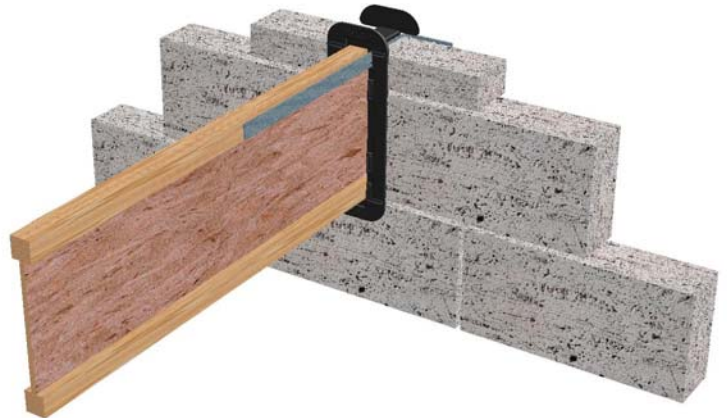
CODE **G913**



Description:

The G913 range is designed to solve the problems of air leakage associated with built in timber joists. The box is placed over the end of the joist and built into the inner leaf of the external wall construction. As the timber dries out and shrinks the seal is still maintained between the box and the masonry, thus preventing air leakage into the cavity.

Located around the inner flange is a number of push out pockets for the location of restraining straps as required.



References:

DOE: Building Regulations Part L

Robust Details, Part E: Resistance to the Passage of Sound. (Appendix A, Pages 2-3).

| | |
|-----------------------|-------------------|
| COLOUR | Translucent White |
| MATERIAL | Polypropylene |
| MANUFACTURING PROCESS | Injection Moulded |

MANTHORPE BUILDING PRODUCTS LTD
MANTHORPE HOUSE
BRITAIN DRIVE
CODNOR GATE BUSINESS PARK
RIPLEY
DERBYSHIRE DE5 3ND

TEL: 01773 514 200
FAX: 01773 514 262
EMAIL: sales@manthorpe.co.uk
WEB: www.manthorpe.co.uk

DRN R.P

Date 26.8.04

DRG No

Issue

The company maintains a policy of continuous development of its product range and reserves the right to amend the specification without notice.

MBP 8221
Sheet 1 of 2

A

Joist Seal Product Code Selector (Height of 302mm)

CODE **G913**

The G913 Joist Seal accommodates both timber joists and I-beams with a height between 226mm and 302mm. For Joists shorter than 226mm the G912 Joist Seal can be used.

In order to match the correct joist seal to your specific requirements the following product code system is used: -

Product Code:

G91A-BB-CCC

A = Maximum Joist Height (either 225mm or 302mm)

B = Joist Width (mm)

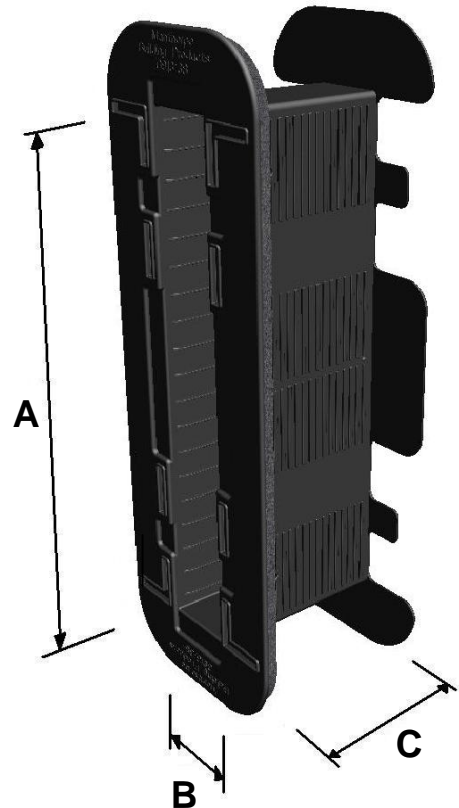
C = Depth of Blockwork (mm)

Example:

You are using a joist with a height of 302mm and a width of 45mm. This will be built into blockwork with a bed depth of 115mm.

You should use the following Joist Seal: -

Product Code: **G913-45-115**



Product Code Selector Chart:

| | | Blockwork Depth (Dimension C) | | | | |
|---------------------------|-------|-------------------------------|-----------------|-----------------|-----------------|-----------------|
| | | 100mm Blockwork | 115mm Blockwork | 125mm Blockwork | 130mm Blockwork | 140mm Blockwork |
| Joist Width (Dimension B) | 38mm | G913-38-100 | G913-38-115 | G913-38-125 | G913-38-130 | G913-38-140 |
| | 45mm | G913-45-100 | G913-45-115 | G913-45-125 | G913-45-130 | G913-45-140 |
| | 60mm | G913-60-100 | G913-60-115 | G913-60-125 | G913-60-130 | G913-60-140 |
| | 76mm | G913-76-100 | G913-76-115 | G913-76-125 | G913-76-130 | G913-76-140 |
| | 90mm | G913-90-100 | G913-90-115 | G913-90-125 | G913-90-130 | G913-90-140 |
| | 120mm | G913-120-100 | G913-120-115 | G913-120-125 | G913-120-130 | G913-120-140 |
| | 150mm | G913-150-100 | G913-150-115 | G913-150-125 | G913-150-130 | G913-150-140 |
| | 180mm | G913-180-100 | G913-180-115 | G913-180-125 | G913-180-130 | G913-180-140 |

*G913 = Height of 302mm (Dimension A)

MANTHORPE BUILDING PRODUCTS LTD
MANTHORPE HOUSE
BRITAIN DRIVE
CODNOR GATE BUSINESS PARK
RIPLEY
DERBYSHIRE DE5 3ND

TEL: 01773 514 200
FAX: 01773 514 262
EMAIL: sales@manthorpe.co.uk
WEB: www.manthorpe.co.uk

DRN R.P

Date 26.8.04

DRG No

Issue

The company maintains a policy of continuous development of its product range and reserves the right to amend the specification without notice.

MBP 8221
Sheet 2 of 2

A